



Our Lady's Catholic Primary School

52-60 White Street, Wangaratta Vic 3677

Correspondence to:
PO Box 486
Wangaratta 3676

Phone: (03) 5721 3783 Fax: (03) 5721 9401
Email: principal@olwangaratta.catholic.edu.au

Our Lady's Primary School is a child safe school. All students enrolled, and any child visiting, have a right to feel safe and be safe.

NEWSLETTER NO. 27 TUESDAY AUGUST 29th 2017

In most of our classrooms this term we have a focus on our mission as Catholics with particular emphasis on what we can do to help anyone who is struggling. The following prayer comes from CARITAS which is the one of the Catholic Church's mission services. It challenges us to give back in appreciation for what has been given to us:

Dearest God,
Open our eyes and our hearts so that we are able to
see you in every one of your children.
May we embrace first ties that bind us to each other and recognise that
you created us into one family for compassion, caring and sharing.
From the time of birth, we need each other;
other human hands have lifted us up.
We rely on others to feed us,
protect us, teach us and love us into life.
Open our hearts to the needs of your innocent people
suffering from the persistent burden of hunger and
mobilise our spirits to respond to them.
Counter the outrage and anger we feel against injustice with love.
Grant that inspired by the vision of human solidarity, we may invest our
material resources in bringing liberation to the despair of poverty and
returning hope to your children.
Stir our hearts to compassionate action that transforms
suffering into redemptive love, now and forever more.

Amen.

Prayer: Fr Ignatius Ikunza, Hakimani Jesuit Centre, Kenya.

PARISH MASSES

Masses for this weekend are:

* Saturday	6.00 pm	St. Patrick's
* Sunday	8.00 am	St. Patrick's
* Sunday	9.00 am	Our Lady's
* Sunday	10.00 am	Moyhu
* Sunday	10.30 am	Whitfield (1st Sunday)
* Sunday	10.30 am	St. Patrick's

Our Lady's typically has week day Masses on Tuesday and Friday both commencing at 9:00am. Some changes may happen if funerals are held on these days.

SCHOOL MASSES

We have a couple of Masses scheduled for the remainder of this term:

Tuesday September 12:	Bridging Centre will be hosting the students from the Leadership Centre
Tuesday September 19 th	Discovery/Foundation Centres will be hosting the students from the Bridging Centre

All Masses will be held in Our Lady's Church commencing at 9.00am and everyone is most welcome to come along and join in these celebrations.

FATHER'S DAY LITURGY

This Thursday, August the 31st we are holding a liturgy to celebrate the part that fathers and significant males have in the lives of our children. It will be held in the hall commencing at 5:00pm followed by an opportunity to visit the classrooms, play a game or two and then share a sausage before heading home.

AFL 9's

The AFL 9's competition has been rescheduled for next Thursday September 7th. All Leadership Centre students will be heading along to this – there are still a few students yet to return their permission note – if you have not yet signed your child's note please do so by tomorrow.

SCHOOL SPIRIT ACTIVITIES

The students in the Making Jesus Real leadership team are holding some school spirit activities on Wednesday September the 13th in the block between Recess and Lunch time. The intention of these activities is to highlight the importance of community spirit and to help identify how we see this at Our Lady's.

STUDENT FUNDRAISER – FRIDAY SEPTEMBER 22ND

This term the students in the Leadership Centre are working through a Religious Education unit called 'Mission-Living and Sharing' and their Inquiry unit is focussing on care for the kids. These units challenge the students to reflect on their call to mission and identify where they can help. As part of their response to this call they have asked if they can run a number of small fundraising activities on the last day of the term – Friday September 22nd. Students will have the opportunity to bring a dollar or two and then be able to participate in a number of games, purchase treats and buy lunch. It will start at 12:15pm and run until lunchtime. Please feel free to come and join us.

TEACHER ADVISOR MEETINGS

In the weeks beginning the September 11th and 18th each classroom will be holding their Term Three Teacher Advisor meetings. These meetings are an opportunity to sit and reflect on recent learning and then look at what learning needs to take place next. Term Three reports will also be presented and explained at these meetings. It is important that we all make this opportunity to talk about learning a priority.

TERM THREE CELEBRATION OF LEARNING

Our celebration of learning for Term Three will be held after school on Wednesday September 20th from 3.10pm.

PUPIL FREE DAYS TERM FOUR

We have three Pupil Free days set aside in Term Four as well as a Public Holiday:

Monday November 6th - Bishop's Holiday (each year that the Bishop is here to conduct Confirmation/First Eucharist he kindly grants us an additional Pupil Free Day). The following day – Tuesday November 7th is the Melbourne Cup Public Holiday.

Monday November 20th – 2018 Planning Day

Monday December 4th – Report Writing Day

2018 FOUNDATION ENROLMENTS

If you have child starting in our Foundation class in 2018 please call into the office and collect an enrolment form and complete and return it, along with a copy of your child's Birth Certificate and Immunisation Certificate, by the end of this term. If you know of anyone who interested in sending their child to Our Lady's to commence Foundation in 2018, please get them to contact the school office to make an appointment for a chat and a tour of the school.

MONDAY MORNING ASSEMBLY THANK YOU

At the start of each week we give thanks to some of the positive behaviours that we noted in the past week. It is an opportunity to acknowledge helpful behaviours, it raises language that highlights good choices and it models the need to regularly thank people in a way that communicates what we are thankful for. This week we thanked:

- For all the students who do their best by acting in ways that keep others safe
- To everyone who helps others succeed by making sure they enjoy what they are doing
- For showing respect for everyone by doing what is expected of them
- For the positive behaviour choices made during our Book Week activities
- To everyone who searches for the hero that is inside all of us

POSITIVE BEHAVIOUR EXPECTATIONS

Our expectations focus for this week is 'Doing the right things':

Doing your best:

By regularly washing your hands with soap and water

Helping others succeed:

By sitting down to eat and only leaving the area when finished eating or when asked

Respecting your school:

By using our manners, thanking those who prepare our food and placing waste in the correct bins

Power Play Focus:

Students who do the right thing

Congratulations to Jorja Gambold who was the winner of last week's Power Play Raffle.

WORKING WITH CHILDREN CHECK (WWCC)

New legislation came into effect on 1st August 2017 with regard to who needs a WWCC in schools. The following is an excerpt taken from a letter from the Catholic Education Melbourne last week:

Amendments to the Working with Children Act 2005

Main Points

- ☑ Changes to the *Working with Children Act 2005* (the Act) commenced on **1 August 2017**.
- ☑ The changes to the Act are designed to strengthen the protection of Victorian children by implementing key recommendations from the Royal Commission into Institutional Responses to Child Sexual Abuse.

Child-related Work

- ☑ 'Child-related work' is any work that involves direct contact with a child that is part of the person's work.
- ☑ It does not include occasional direct contact with a child that is incidental to work the person is performing at the school (whether or not that work is paid). For example, a guest speaker invited to talk to children as a special presentation would not be considered to be undertaking child-related work.

Key Changes for Schools

- ☑ There are two key changes to the Act:
 - The definition of 'direct contact' in the Act has been expanded to include oral, written or electronic communication, in addition to face-to-face and physical contact. For example, an online tutor is now included in the definition of 'direct contact'.
 - A Working with Children Check (WWC Check) is now required for anyone engaged in 'child-related work', regardless of whether contact with a child is supervised by another person or not. For example a volunteer at the school who is supervised by another teacher must have a WWC Check if they engage in child-related work.

What does this mean for parents?

- ☑ The changes in the Act do not alter the provisions relating to parents.
- ☑ A parent or immediate relative, who is engaged in an activity in which their child participates, is not required by law to have a WWC Check.

School Policies

☑ **It is important to keep in mind that schools are able to impose more rigorous requirements through their policies and practices, even where that is not required by law.**

- ☑ Schools are encouraged to develop their own policies to assess and verify the suitability of volunteers and visitors to the school, and may require a parent to have a WWC Check, depending on the activities and nature of their involvement.

Our preference is that all parents, grandparents or other family members or friends who regularly volunteer or help out in some capacity at the school, have a valid WWCC. This would involve anyone helping in the classrooms, FunFair, sausage sizzles, movie or cent nights, sports night etc. You can apply for a volunteer WWCC at www.workingwithchildren.vic.gov.au - there is no cost to apply as a volunteer – you just need to register Our Lady's Primary School Wangaratta on your application. You then take the application to Australia Post in Murphy Street as you will need to have a photo taken. The school will get notification of when your WWCC is granted. If you already have a current WWCC for your employment kindly bring it in so we can take a copy of it. If you need to access a computer to apply for a WWCC please make a time with Julie to use one of the school's computers.

If you have any queries about this please do not hesitate to contact me.

POLICY UPDATE

The following comes from our updated policy relating to Sun Protection:

The Hazard

Too much exposure to ultraviolet (UV) radiation from the sun causes sunburn, skin damage and increases the risk of skin cancer. Sun exposure in the first 15 years of life contributes significantly to the lifetime risk of developing skin cancer. Australia has the highest rate of skin cancer in the world. Skin cancers account for 80% of all new cancers diagnosed in Australia each year. Melanoma is the most diagnosed cancer for 15 – 44 year olds.

Our Lady's is committed to providing a safe working environment for all our students, workers and visitors.

It is our policy to:

- increase student and community awareness about skin cancer and sun protection;
- encourage the entire School community to use a combination of sun protection measures;
- work towards a safe school environment that provides shade for students, staff and the School community;
- assist students to be responsible for their own sun protection;
- and ensure that families and new staff are informed of this policy.

Sun Protection Strategies

General

- All students and staff use a combination of sun protection measures throughout the day to ensure they are well protected. Particular care must be taken in summer months between 10 am and 3 pm when UV levels reach 3 and above.
- This policy is considered when planning all outdoor events (e.g. assemblies, camps, excursions and sporting events).

Shade

- The School makes sure there is sufficient shelter and trees providing shade in the school grounds particularly in areas where students congregate (e.g. lunch areas, canteen, outdoor lesson areas and popular play areas).
- Shade provision is considered in plans for future buildings and grounds.
- The availability of shade is considered when planning excursions and outdoor activities.
- Students are actively encouraged to use available areas of shade when outside. Students who do not have appropriate hats or outdoor clothing are asked to stay in an area protected from the sun.

Hats

- Students are required to wear hats that protect their face, neck and ears whenever they are outside.
- Recommended sun-safe hats include legionnaire, broad-brimmed and bucket hats. Baseball caps do not offer enough protection and are not recommended.
- Students who do not have an appropriate sun protective hat will be asked to stay in shaded areas only.

Sunscreen

- Whenever it is anticipated that students may be exposed to direct sun for any extended period, and therefore the potential of sunburn, their parents/carers will be requested to provide SPF 30+(or greater) broad spectrum, water resistant sunscreen.
- SPF 30+(or greater) broad spectrum, water resistant sunscreen will also be made available for staff and students' use in these circumstances.
- Sunscreen should be applied at least 20 minutes before going outdoors and reapplied every two hours as required or more often if sweating or in the water. Time will be allocated for sunscreen application prior to outdoor activities.

Sun Glasses

- Close-fitting wrap-around sunglasses that comply with Australian Standards AS 1067:2003 (Category 2, 3 or 4) are encouraged but optional.

Role modelling

- Staff act as role models by using a combination of sun protection measures as outlined above when the UV level is 3 or above.
- Families and visitors are also encouraged to use a combination of sun protection measures (sun protective clothing and hats, sunglasses and sunscreen) when participating in and attending outdoor school activities.

Curriculum

- Sun protection and skin cancer awareness programs are incorporated into appropriate areas of the school curriculum, including use of clothing and sunscreen, prevention education, websites, etc.
- Students are encouraged to be involved in initiatives to promote and model sun protection measures to the whole School community
- Sun safe behaviour is regularly reinforced and promoted to the whole School community through newsletters, School public website, parent meetings, staff meetings, School assemblies, student and teacher activities and on student enrolment.

Uniform

Sun protective clothing is included in the School uniform and sports uniform. This includes clothing with:

- elbow length sleeves;
- shirts and tops that cover shoulders, with a collar that sits close to the neck, above the collarbone;
- appropriate hats;
- appropriate sunglasses; and other appropriate sun protective clothing.

MOWING AROUND THE SCHOOL

Our mowing roster for the remainder of this year is as follows:

September	Luke Holley & family
October	Darren Bell & family
November	Graeme Lovel & family
December	Peter Sullivan & family

Mark

P & F NEWS

P & F MEETING

Our next meeting will be held **TOMORROW Wednesday August 30th** at 9.00am in the staffroom. Everyone is most welcome to come along.

FATHER'S DAY RAFFLE

Don't forget to send in your tickets for our Father's Day raffle by this Thursday August 31st. Tickets cost 50 cents each or 3 for \$1-00. If you buy/sell all the 12 tickets you need to return \$4-00 to the office. There will be one prize which will be drawn at our Father's Night this Thursday August 31st:

\$50-00 Coles/Myer Voucher, a box of Cadbury chocolate frogs, a stubby holder and a pair of socks

FATHER'S DAY GIFTS

Students can purchase a Father's Day gift either this Thursday August 31st or Friday September 1st from 2.45pm to 3.15pm each day. Gifts cost \$2-00 each – please note only one gift per child.

PIE/LAMINGTON DRIVE

We will need a few helpers to pack the pie/lamington orders tomorrow. This will take place immediately after our P & F meeting tomorrow morning at approximately 10.30am.

Orders can be collected from the hall from 11.30am tomorrow - Wednesday August 30th.

Please note: Due to a lack of fridge space, pie orders will not be refrigerated once they are delivered so the earlier you can pick up your orders after 11.30am the better.

CHOCOLATE DRIVE

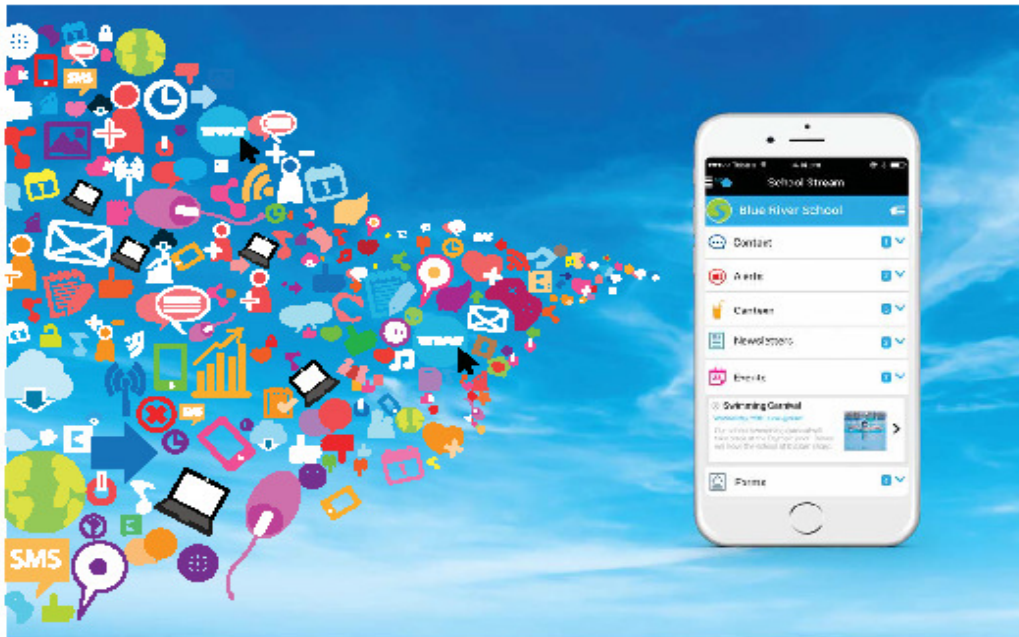
We will keep selling the left over chocolates at Recess each day for 50 cents each to try and recoup some of the cost. Please note that there will be a limit of 1 chocolate per day per child.

DATES TO REMEMBER

Wednesday	August 30 th	9.00am P & F Meeting <i>All Welcome</i> Pie/Lamington Drive orders to be collected from school hall <u>from 11.30am</u>
Thursday	August 31 st	Father's Night 5.00pm <i>All Welcome</i>
Thursday	September 7 th	11.30am to 2.45pm Leadership Centre AFL 9's Competition
Tuesday	September 12 th	9.00am Bridging Centre Mass <i>All Welcome</i>
Friday	September 15 th	P & F Cent Night 7.00pm <i>All Welcome</i>
Tuesday	September 19 th	9.00am Discovery/Foundation Centres Mass
Wednesday	September 20 th	Celebration of Learning 3.10pm <i>All Welcome</i>
Friday	September 22 nd	Student Fundraising Activities 12.15pm to 1.15pm End of Term Three

Your school now has a **FREE** app

Receive school information, instantly and directly to your smartphone



How to download your **FREE** app

- 1 From your mobile device go to the **App Store (iPhone/iPad)** OR **Google Play (Android)** search for **School Stream** and download the app to your phone
- 2 Make sure you agree to **push notifications**
- 3 Once School Stream has finished installing, open the app, type your school name into the search **THEN** select your school

For more detailed instructions go to schoolstream.com.au/download

 **schoolstream**
A smart solution for smart schools
www.schoolstream.com.au • 1300 721 270

earn &
learn

Earn & Learn is on again

Start collecting today

Anyone can help our school earn amazing resources:

- Earn one sticker for every \$10 spent at Woolworths*.
- Complete Sticker Sheets.
- Drop Sheets in a Collection Box for our school!.

Runs 26 July to 19 September 2017.

Find out more at woolworths.com.au/earnandlearn



*That's why
I pick Woolies*



*From Wednesday 26 July to Tuesday 19 September 2017. Excludes liquor, tobacco and gift cards.
†By Tuesday 19 September 2017.

